



Interior Design Guide

Your HOME is a canvas
that reflects your
personality, life
experiences, and beliefs.
It is more than just a place
to live; it is a place of quiet
solace and comfort...

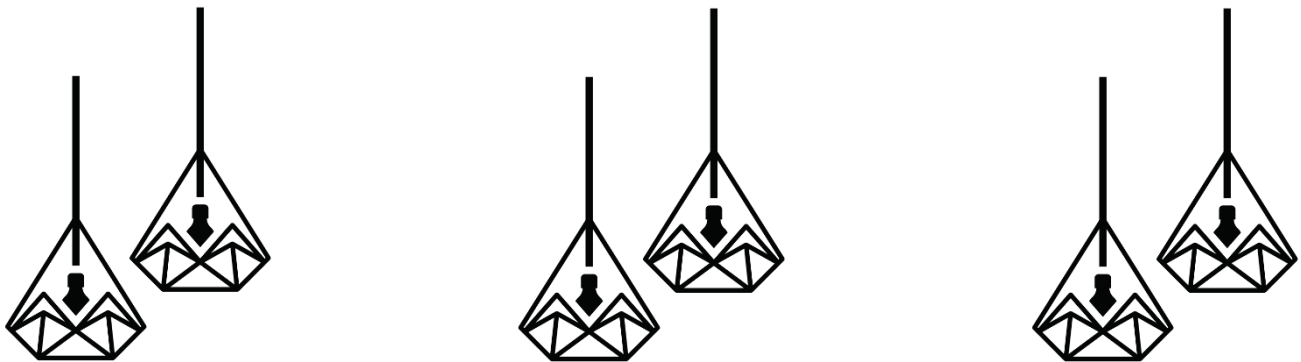
If you are not making a difference in other people's lives, you should not be in business. It's
that simple; Richard Branson



At Chaos - Professional Organisers & Interior Design, we believe decluttering is more than simply tidying up - it's a transformative journey that creates a home filled with peace, comfort, and clarity. Your home should be a reflection of your personality, life experiences, and values, not a source of stress and overwhelm.

In today's fast-paced world, clutter builds up quickly and can take a toll not only on your space but also on your well-being. Studies have shown that disorganized environments often increase stress and anxiety, leaving us feeling scattered. We understand the emotional weight items can carry, and with the right guidance, we can help you restore order while creating an environment that supports calm, productivity, and happiness. Whether you want to transform a single room, your office, or your entire home, we provide practical solutions tailored to your goals. From decluttering to organizing and implementing sustainable systems, we ensure that your space stays functional, clutter-free, and welcoming long after the process is complete. Let us help you reclaim your living space and rediscover the joy of a home that offers quiet solace and comfort. With our support, decluttering doesn't have to feel overwhelming - it can be the beginning of a fresh, balanced lifestyle.

The first step in decluttering your home is to set a clear goal. Whether you want to declutter a specific room or your entire home, garage, or office space, having a clear objective will help us stay focused and motivated throughout the process. Once we've decluttered your home, the next step is to organize your belongings in a way that promotes efficiency and accessibility. Investing in storage solutions such as bins, baskets, and shelves will keep your items organized to establish daily habits to maintain a clutter-free home. Let your decluttering journey begin, with our help you can have a place to live, a place of quiet solace and comfort... How can we HELP?



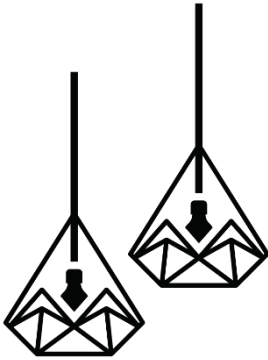
"For God is not a God of disorder or chaos but of peace"

"a clean space, is a peaceful place"



Our Mission:

Our mission is to create spaces that inspire, uplift, and transform lives, while telling a story that speaks to who you are and what you stand for... This is where the magic happens and spaces become crafting's of experience and happiness.



Our Vision:

It's about crafting environments that reflect the personality, needs, and aspirations of the people who use them, while also promoting well-being, productivity, and happiness.

- Creating spaces that tell a story and evoke emotions
 - Balancing aesthetics and functionality
- Incorporating sustainable and innovative solutions
- Enhancing the user experience through thoughtful design
 - Reflecting the client's identity and values
- Understanding the client's lifestyle and preferences
 - Creating a cohesive and harmonious atmosphere
 - Paying attention to lighting, texture, and colour

a world of design for your budget



Modern

Modern is a broad design term that typically refers to a home with clean, crisp lines, a simple colour palette and the use of materials that can include metal, glass, and steel.

Modern design employs a sense of simplicity in every element, including furniture. A word that is commonly used to describe modern style is sleek, and there is not a lot of clutter or accessories involved with a modern style.



Modern

Bathroom

Modern style bathrooms are bold, strong, and simple with clean and straight lines and an absence of clutter. Straight lines are a defining feature of modern styling bathrooms and are exhibited in countertops, sinks, and even artwork.

Top quality materials such as stone, porcelain, teak, and marble are common elements of modern design, in addition to small pops of colour from art or fresh greenery.



Contemporary

Modern and contemporary are two styles frequently used interchangeably. Contemporary is different from modern because it describes design based on the here and now.

The primary difference separating modern and contemporary design style is that modern is a strict interpretation of design that started in the 20th century. Contemporary on the other hand, is more fluid and can represent a sense of currency with less adherence to one particular style. For example, contemporary style may include curving lines, whereas modern design does not.



Contemporary

Bathroom

Clean lines, clutter-free expanses of open space, and minimalist adornment are all hallmarks of contemporary style bathrooms. Expect to see plenty of polished hardwood, metal accents, and a clean and simple colour palette in this type of décor.

Light and dark elements are often used together to create visual contrast. Simplicity is at the heart of contemporary styling, and the focus is on the details. Look closely for high-quality door pulls and knobs made from muted brushed metals in addition to countertops and flooring constructed from durable stone, wood, or tile.



Minimalist

The minimalist concept is one that is popular Design Styles. It takes notions of modern design and simplifies them further.

Colour palettes are neutral and airy; furnishings are simple and streamlined, and nothing is excessive or flamboyant in accessories or décor.

Minimalism is ultimately defined by a sense of functionality and ultra-clean lines.



Minimalist

Bathroom

Minimalist style bathrooms are sparingly adorned and maximize open space, air, and light. Fresh green plants accentuate the bathroom space and provide gentle bursts of colour and contrast.

Minimalist style bathrooms typically utilize an array of soft browns, beiges, and cream colours, and may feature polished wood flooring and accents, marble, or tile.



Industrial

Industrial style as the name implies, draws inspiration from a warehouse or an urban loft.

There is a sense of unfinished rawness in many of the elements, and it's not uncommon to see exposed brick, ductwork and wood. An iconic home with an industrial design theme would be a renovated loft from a former industrial building.

Think high ceilings, old timber, and dangling metal light fixtures with sparse functional furniture. There may possibly be one or two pieces of abstract art or photography to add a dash of colour to an otherwise neutral colour scheme derived from the primary materials of wood and metals.

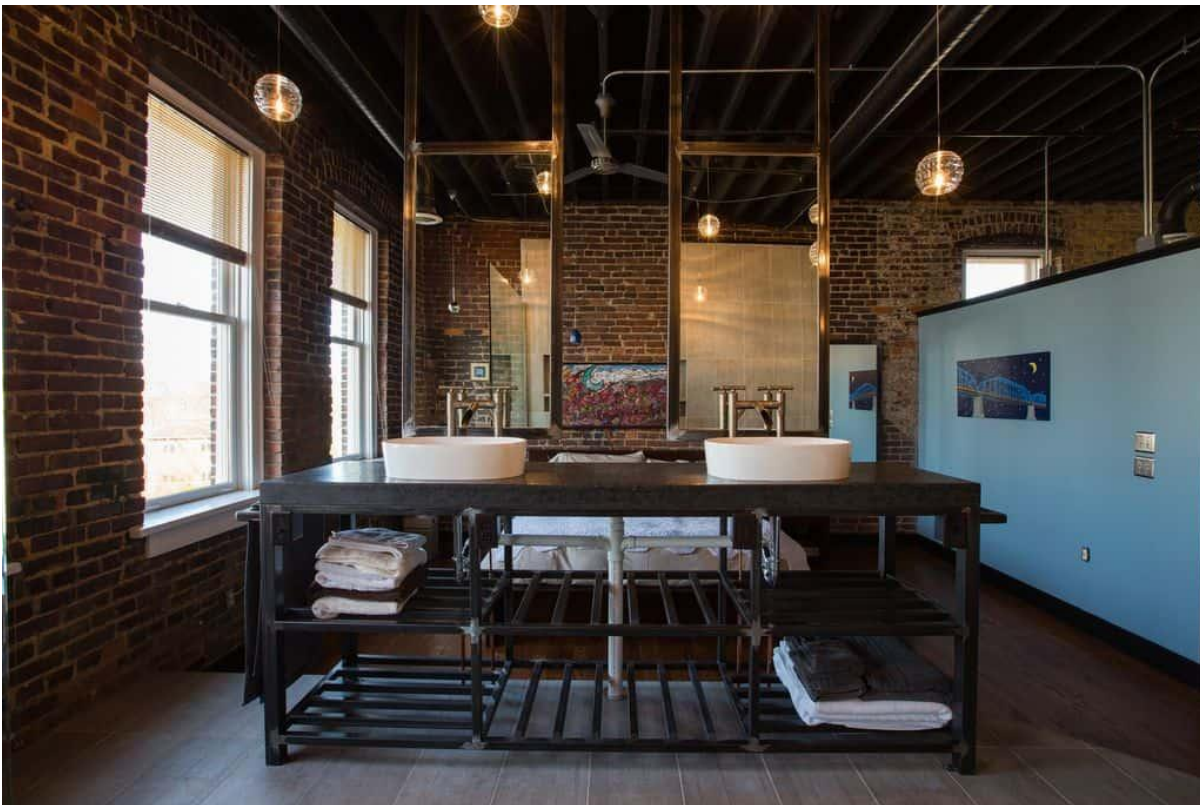


Industrial

Bathroom

Similar to modern style bathrooms, industrial style is about minimalism, bold colours, high contrast pairings, and a coolly pervasive element of sleekness and simplicity.

Mixed woods, white accents, and marble countertops are common design elements. Notice the crisp white subway tiling in this primary bathroom picture and how it contrasts so crisply with dark brown wood, along with the warmer hued brown of the floor.



Mid- Century Modern

Mid-century modern is a throwback to the design style of the mid-1900s—primarily the 1950s and 60s. There is a retro nostalgia present in Mid-Century Modern Design, and also some elements of minimalism. Functionality or “fussy-free” was the main theme for Mid-century design. Its emphasis on pared-down forms, natural or organic shapes such as “egg-shaped” chair, easy-to-use contemporary designs and simple fabrications. It easily complements any interior and helps with seamless transition from interior to exterior.



Mid-Century Modern

Bathroom

Mid-century style bathrooms utilize vintage furniture in the Eames style and adorn it with beautiful ornamentation like brushed gold metals and large mirrors in unique shapes.

Kitschy Vintage details in fun colours are integral parts of the mid-century look and vibe. The mid-century style used colour as a punchy accent to add contrast and visual appeal. Swaths of fresh and crisp white are used to give this environment a serene feel.



Scandinavian

Scandinavian design pays homage to the simplicity of life demonstrated in Nordic countries. Scandinavian furniture design often feels like a work of art, although it is simple and understated. There's functionality in the furniture along with some interesting lines, many of which have a sculptural influence.

Other common characteristics include all-white colour palettes and the incorporation of natural elements like form-pressed wood, bright plastics, and enamelled aluminium, steel, and wide plank flooring. If there are pops of colour it often comes from the use of art, natural fibre throws or furs, or a single piece of furniture.

Spacious, natural lighting, less accessories and functional furniture characterizes Scandinavian designs.



Scandinavian

Bathroom

Scandinavian style bathrooms are about simplicity, elegance, and functionality. An emphasis is placed on clean lines and an overall uncomplicated and easy-going casual aesthetic.

Dark and light colours are used in a complementary fashion to unify design components and create cohesion.

Free of clutter, adornment, and excessive ornamentation, Scandinavian styling is reminiscent of contemporary style bathrooms.



Traditional

Traditional design style offers classic details, sumptuous furnishings, and an abundance of accessories. It is rooted in European sensibilities.

Traditional homes often feature dark, finished wood, rich colour palettes, and a variety of textures and curved lines. Furnishings have elaborated and ornate details and fabrics, like velvet, silk and brocade, which may include a variety of patterns and textures.

There's depth, layering and dimensionality within most traditional designs.



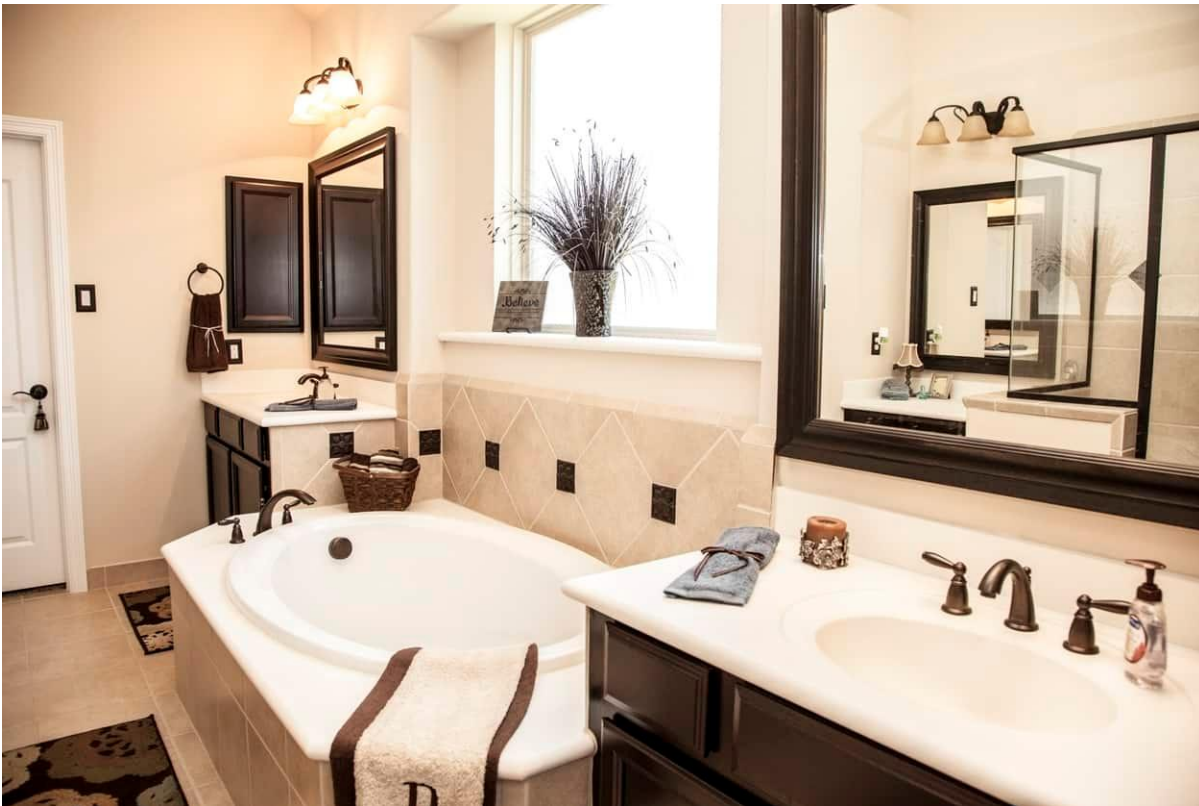
Traditional

Bathroom

Traditional style bathrooms emphasize comfort, functionality, and practicality.

Classic colours punctuate this design setting. Polished wood, complementary colours, and the usage of glass, tile, and marble are all integral parts of traditional bathrooms.

Typically neutral in tone, traditional bathrooms are comfortable, relaxing, and inviting.



Transitional

Transitional is an extremely popular style because it borrows from both traditional and modern design to facilitate a space that is not “too much,” in terms of one style or another. There is a sense of balance that is appealing and unexpected.

A transitional design may incorporate modern materials, such as steel and glass, and then unite them with plush furnishings.

Transitional design also includes relatively neutral colour palettes, creating a calming and relaxed space that manages to feel both stylish and sleek, as well as warm and inviting.



Transitional

Bathroom

Transitional style bathrooms encompass the best of both worlds in that the style utilizes both old and new design elements.

Wood, stone, glass, and exotic finishes are not uncommon in these types of bathrooms. Unique details such as patterned floors, dark-finished metals, and artisan door handles will all find a place in the Transitional style décor scheme.

Transitional styling aims to achieve both functionality and practicality alike.



French Country

Warm, earthy colours are indicative of a French Country design style, as are worn and ornamental wooden furnishing. The style has an overarching farmhouse inspiration.

French Country design may include soft and warm tones of red, yellow, or gold and natural materials like stone and brick. French Country design can include collections of ornate porcelain dishes and heavy linens and bed coverings.



French Country

Bathroom

French Country style primary bathrooms are brimming with opulent details. Woven rugs in rich colours adorn the floors or walls. Natural coloured tile is accented by rich, dark brown wood, and luxurious metal detailing.

Textures, lighting, and generous amounts of bold contrasting colours define the French Country styled bathroom in a signature fashion.

The overall look and feel of the setting are distinct with Greek and European undertones throughout the space.



Bohemian

Bohemian is a popular style for home design and fashion. It reflects a carefree lifestyle with little rules, except to follow your heart's desire.

Bohemian homes may include vintage furniture and light fixtures, globally inspired textiles, and rugs, displays of collections, and items found in widely varied sources including flea markets and during one's travels.

It is not uncommon to spot floor pillows and comfortable seating spaces when incorporating the bohemian style. This eclectic style can incorporate an ultra-glam chandelier paired with a well-worn rug and a mid-century chair. Within the Bohemian style, there is a laissez-faire attitude where anything goes as long as you love it.



Bohemian

Bathroom

Bohemian styling is inclusive of a little bit of everything. A carefully curated collection of design elements comprises the décor of the Bohemian bathroom. Expect the unexpected in these types of settings.

A fleur-de-lis pattern in an unexpected yellow or perhaps a sparkling crystal chandelier with gold patina accenting. Unusual colour choices and a mix of textures, materials, and finishes are common in this style.



Rustic

Rustic design is drawn from natural inspiration, using raw and often unfinished elements including wood and stone.

Rustic design may incorporate accessories from the outdoors with warmth emulating from the design and architectural details that may include features like vaulted ceilings adorned with wood beams or reclaimed wood floors.

Many designs now integrate rustic design with more modern furnishings and accessories.



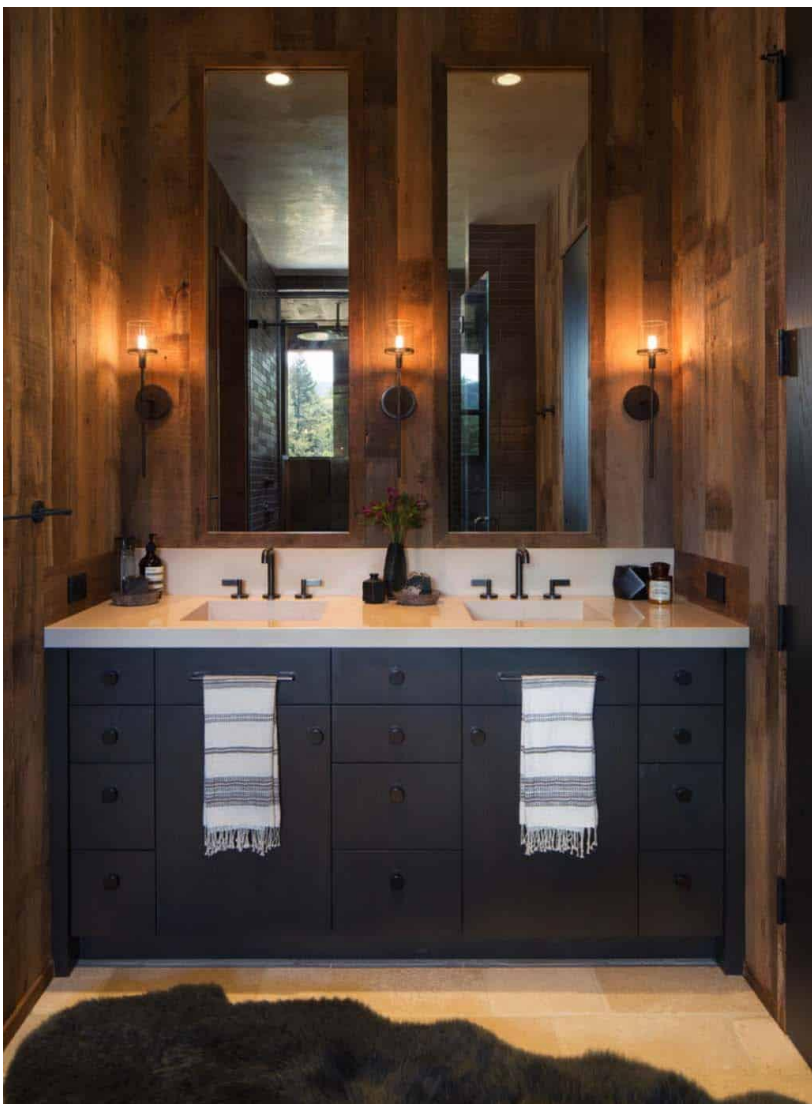
Rustic

Bathroom

The Rustic style bathroom is similar to the Craftsman style, as well as the country and farmhouse style.

An abundance of wood is seen in Rustic styling, with an emphasis on raw and organic finishes. Craftsmanship is an imperative part of this decor, as durability is one of the main aims of Rustic style construction.

Expect hardy materials along with plenty of handcrafted artisan touches that are top quality and simplistic in their design.



Shabby Chic

Shabby chic is vintage-inspired style, but compared to Bohemian and other styles, tends to be more feminine, soft, and delicate.

Shabby chic furnishings are often either distressed or appear that way; paint tends to have antique-style finishes. The Shabby Chic colour palettes include white, cream and pastels. Light fixtures and wall hangings may be ornate and continue the feminine vibe of shabby chic design



Shabby Chic

Bathroom

The shabby-chic style is replete with sweetly romantic details. Copious amounts of distressed white are used in this style along with plenty of soft pastel colour accents.

Lacy materials, floral patterns and artwork, brushed metal accents, and ribbon detailing are ubiquitous sights in the shabby chic style.

An emphasis on air, light, and open space gives this style concept a lightly refreshing feel that invites calm and relaxation.



Hollywood Glam

Also referred to as Hollywood Regency, Hollywood Glam is a design style that tends to be luxurious, over-the-top, and opulent. It is a dramatic design style, perfect for a homeowner who enjoys making a statement.

This design style can incorporate some features of Victorian design, including plush, velvet furnishings, tufting and antiques. The colour palettes are particularly bold—think purples, reds, and turquoise.



Hollywood Glam

Bathroom

Tropical style bathrooms usually feature a simple design aesthetic with a focus on lush green foliage and the top-quality craftsmanship of the materials used throughout the bathroom.

Expect to see an exotic stone or polished wood floors, open ceiling beams, plenty of greenery, and raw detailing with a natural flair. Open layouts offering copious amounts of light and space are typical of these bathroom styles.



Coastal / Hamptons

Coastal style also dubbed Hamptons style, hails from the iconic U.S. beachside area. Common features include light, airy colour palettes with cool neutral shades paired with blues and greens. Furnishings are often white or beige. The room can contain elements of wood and accessories are often inspired by the sea.

Blue and white striped patterns for pillows, large windows, white plush sofas, and painted white wood are also common fixtures of the classic Coastal/Hampton style.

The intention is to create a relaxed and comfortable environment that is inspired by the beach and ocean.



Coastal / Hamptons

Bathroom

Coastal / Hamptons style bathrooms take design cues from the ocean and its surrounding beauty.

Cool shades of watery blue and aqua are used to create a calming and relaxing effect. Decorative ornamentation can include jute fabrics, seashells, sand, ocean-themed art, and a variety of complementary colours. Crisp white accents lend a fresh burst of vitality to the bathroom and highlight the cool and subdued blue and green hues.



Farmhouse

Farmhouse interior design is defined by practicality and comfort, relying on readily available materials and colours. Wood elements and white tones are indicative of farmhouse style. Timber was the easiest to come by, which is why there is such an emphasis on wood elements.

Modern farmhouse style evokes feelings of warmth and comfort. It's traditional without being fussy, classic without being like a museum, and comfortable in a way that makes you want to put your feet up and stay a while. While classic farmhouse style evokes homesteads with plenty of vintage furnishings and traditional fabrics, modern farmhouse style is a bit less rustic and adds more contemporary touches like a neutral colour scheme and smooth lines. Modern farmhouse is all about mixing comfortable furniture with salvaged materials like reclaimed wood. Antiques are right at home in modern farmhouse interiors, but none that are too delicate to touch. Everything is tactile and tangible. Most of all, modern farmhouse style is cosy without being cluttered.



Farmhouse

Bathroom

Farmhouse style bathrooms are extremely popular these days. Part rustic and part country, with a dash of modern flair, farmhouse style bathrooms are full of unique details.

Sliding barn doors on tracks are a popular design element. Typical of this style are high ceilings with open beams, generous amounts of polished wood, and plenty of white, glass, and contrasting details.



Kitchens

The One Wall Kitchen

Usually found in smaller kitchens, this simple layout is space efficient without giving up on functionality. Consisting of cabinets installed against a single wall, the One Wall Kitchen can have upper and lower cabinets or shelving over base cabinets, creating a clean aesthetic.

How to Make A One-Wall Kitchen Layout Work:

Think vertical. You only have so much width to work with, so taking your cabinets up as far as possible will help create extra storage space.

While the traditional work triangle is not possible in a one-wall kitchen, try to put your fridge on one end, oven, and hob in the middle and the sink at the other end. If your cabinets do not go up to ceiling, utilise the space above them by storing lesser-used items there. Alternatively, you can use this space as a display area to strengthen the theme of your kitchen.



The Galley Kitchen

With a very economical use of cabinets, the galley kitchen consists of two rows of cabinets facing each other, creating an inner passage or galley between them. By eliminating the need for corner cupboards, this type of layout uses every millimetre of space without wastage. The uncomplicated design also means that there are fewer special gadgets necessary, making this a cost-efficient option as well.

How to Make A Galley Kitchen Layout Work:

With an additional row of cabinetry, the galley kitchen already offers more flexibility when it comes to storage space. Especially for bigger families or multiple-cook kitchens, it is important to have the work areas along only one of the walls, not both. This will help you to avoid traffic through the work triangle and eliminate the risk of injury.



The L-Shaped Kitchen

A practical layout option for small and large kitchens, the L-shaped kitchen has cabinets along two perpendicular walls. Although the corner necessitates some clever cabinetry solutions to make it practical, the open plan design of the L-shaped kitchen offers great flexibility in the placement of appliances and work zones. While you can have the legs of the L as long as space allows, it is best to keep it to less than 4.5m for ease of use.

How to Make A L-shaped Kitchen Layout Work:

Where space allows, make the most of the corner by installing a walk-in pantry cupboard. This way you will not lose the valuable space that is usually lost in a corner, and you gain a huge asset to your kitchen. With an L-shaped kitchen, you may even be able to create a small breakfast nook in the opposite corner, further increasing your family's enjoyment of the room.



The U-Shaped Kitchen

A great layout for larger kitchens, the U-shaped kitchen consists of cabinetry along three adjacent walls. This type of layout provides plenty of storage but can feel enclosed if there are upper cabinets on all three walls. To avoid this, choose upper cabinets along only one or two walls, with open shelving, focal tiles or a hob hood on the other. The U-shaped kitchen allows for great workflow and multiple users at the same time.

How to Make A U-Shaped Kitchen Layout Work:

Keep window areas open and uncluttered in a U-shaped kitchen. This type of kitchen layout provides the perfect opportunity for an uninterrupted work triangle so make the best use of the space by having the work areas on the opposite end of the back- and entry doors.



The Island Kitchen

A very popular choice in open plan homes, the island kitchen provides a large work surface or storage area in the middle of the kitchen. The island can incorporate a cooking surface, prep bowl and bar or wine fridge. It can also be used simply as a preparation area or for enjoying family meals. While the kitchen has to be big enough to incorporate an island, its placement is a great way to create a natural traffic flow in the area.

How to Make an Island Kitchen Layout Work:

Utilise the island as both a work- and social area where family and friends can interact while meals are being prepared. Because of its location in the centre of the kitchen, it is a great place to install prominent decorative lighting that can also serve as task lighting.



The Peninsula Kitchen

The peninsula is related to the island kitchen and incorporates a kitchen counter that juts out from a wall or cabinetry. This is a great solution that offers the benefits of a kitchen island where space does not allow for an independent island to be installed. The peninsula can be used for food preparation, eating or other tasks while the cook is busy with meal preparation.

How to Make a Peninsula Kitchen Layout Work:

As with the island kitchen, the peninsula offers a great opportunity for interaction during meal preparation. It is a great solution for a small, enclosed kitchen, where a wall can be removed to open the area up to an adjacent room without giving up on storage space.



Contact Us:

Beverley Baumgart

063 069 2027

bevbaumgart@gmail.com

info@chasospros.co.za



Interior Design should speak of its
time and place, but yearn for
timelessness ...